

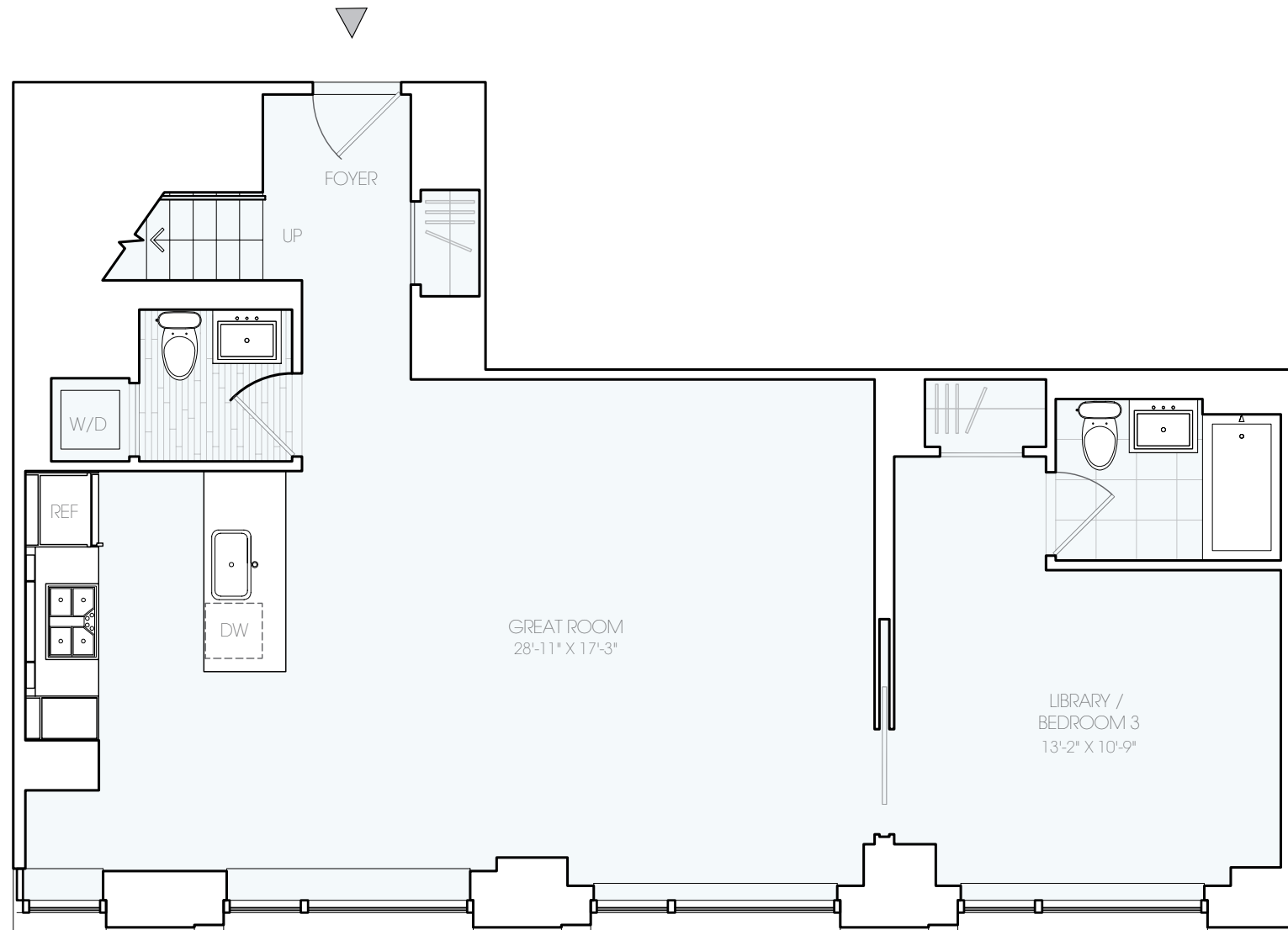
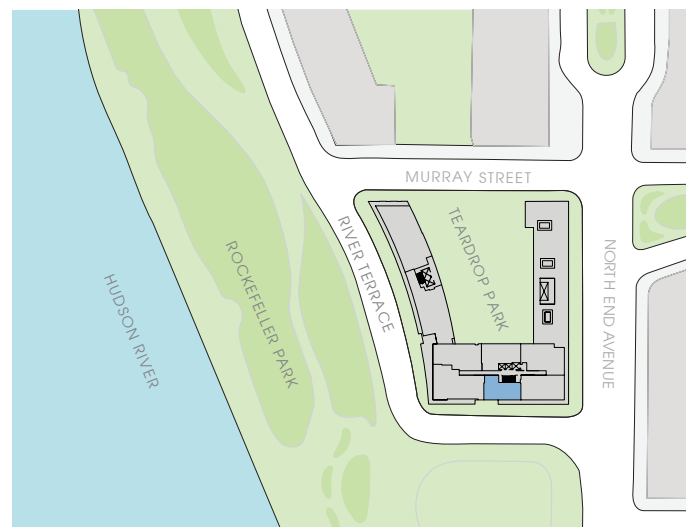
# RIVERHOUSE

RESIDENCE C  
 FLOORS 17 – 23  
 3 BEDROOMS  
 3 BATHROOMS  
 POWDER ROOM  
 1,930 SQ. FT.  
 179.30 SQ. M.

## RIVERHOUSE AMENITIES

- 24-hour Concierge and Doorman
- Rockwell Designed Amenities
  - Lobbies with Saltwater Aquariums
  - Fitness Center with Yoga Studio
  - Lap Pool
  - Billiards Room
- Children's Playroom
- Bicycle Storage
- On-Site Parking
- New York Public Library Branch
- Poets House: National Poetry Library and Literary Center

## LOCATION



LOWER LEVEL



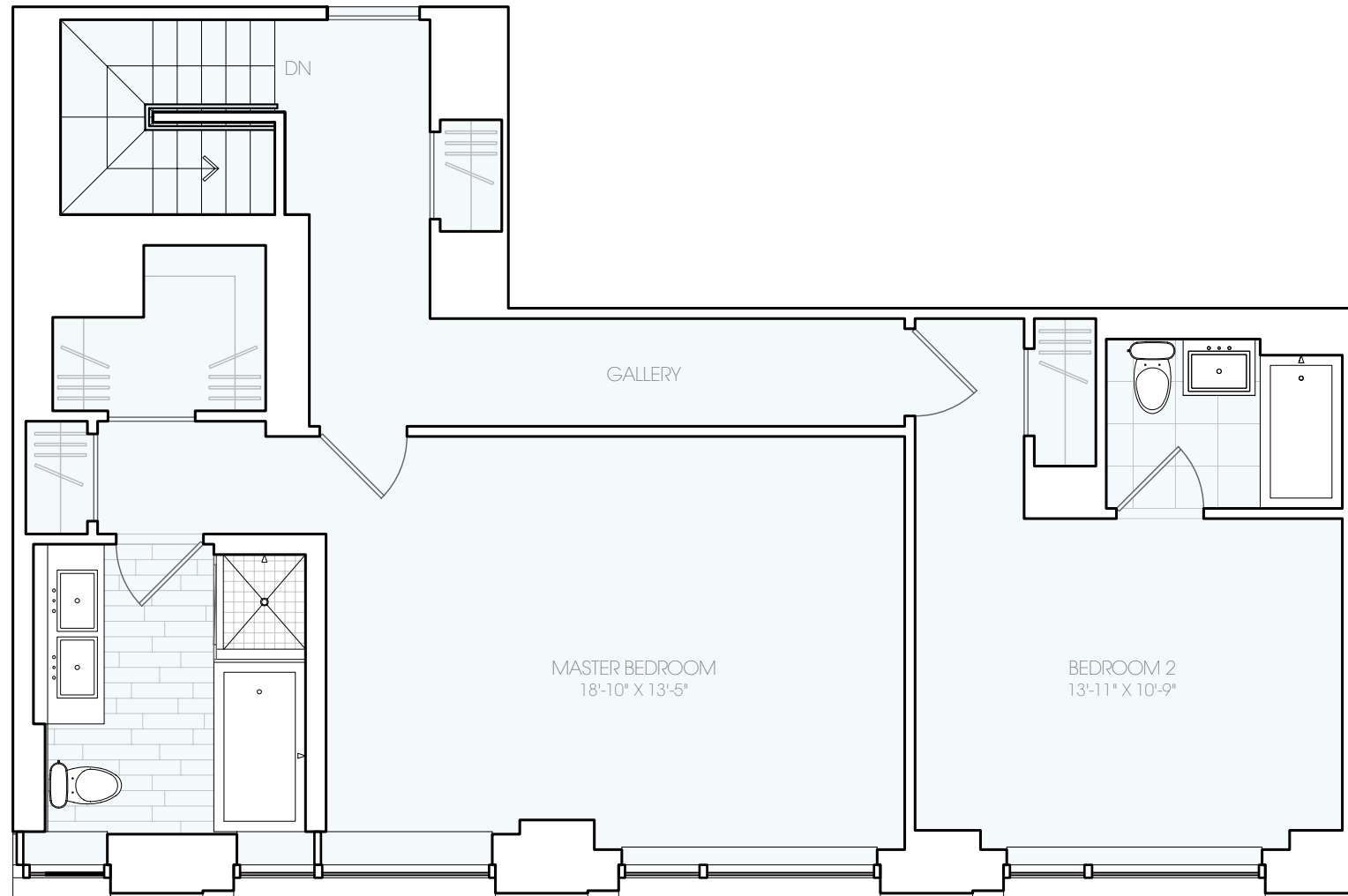
SCALE: NTS



The complete offering terms are in the offering plan available from Sponsor. File No. CD 06-0245. Sponsor: Site 16/17 Development LLC. c/o CREP Riverhouse Holdings, LLC 595 Madison Avenue, 21st Floor, New York, NY 10022. All dimensions and details are approximate and subject to normal construction variances and tolerances. The square footage on this floor plan exceeds the usable floor area. Minor inaccuracies in square footage and inaccuracies in layout and room dimensions as shown on this floor plan will not excuse a purchaser from completing the purchase of a unit, without abatement in price or recourse against Sponsor. Sponsor reserves the right to make changes to a unit in accordance with the Offering Plan.

# RIVERHOUSE

RESIDENCE C  
FLOORS 17 - 23  
3 BEDROOMS  
3 BATHROOMS  
POWDER ROOM  
1,930 SQ. FT.  
1,79.30 SQ. M.



UPPER LEVEL

